



## SUPER SHELTER (SS) - COLLAPSIBLE SHELTERS

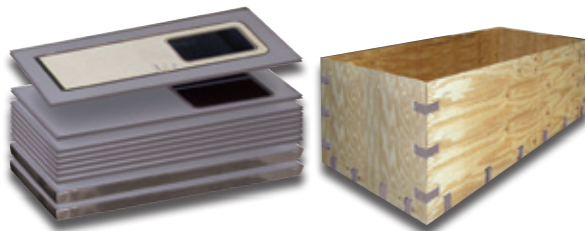
### › Rapid Response, Command, Control, Communications



- Green, solar-powered LED lighting
- Versi-Building incorporates versatile interchangeable panels that allow for easy assembly or replacement of damaged panels
- Ship and store these collapsible shelters flat and realize cost savings in transportation and storage.

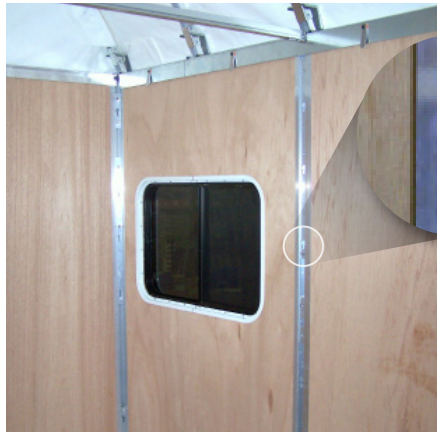
Designs can accommodate air-drop, or Versi-Trailer is designed for easy transport behind any vehicle or even an ATV.

*The Versi-Building line is ideal for military operations. They assemble and store quickly with a minimum of resources required. Many standard options are available, plus Versi-Buildings can be custom designed for unique and demanding mission requirements. These may include temporary command centers, quarantine facilities, or climate-controlled living quarters.*





## Products



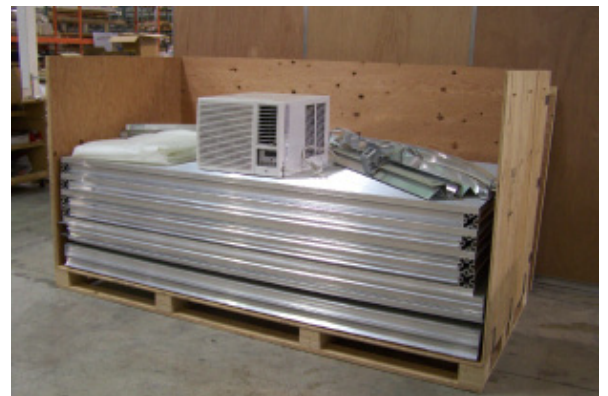
Aluminum extrusions feature holes for adding hang-on accessories



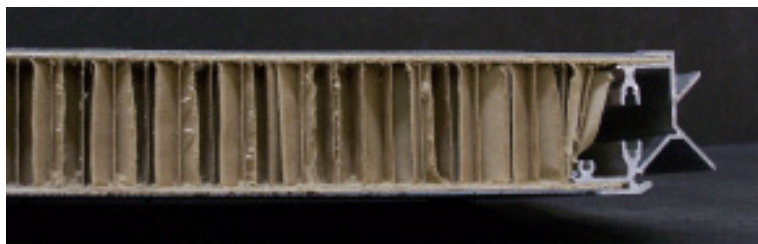
Electrical Access Panel - wired for both 110 volt and computer



Interior, showing roof bow system. White color allows light penetration.



Super Shelter, as it ships in a V-Crate™



Cross-section of wall panel

### ***Collapsible Shelters Specifications:***

- Expands in 4' increments for easy and quick flexibility from 8'x8' to 16'x20'.
- Provides a safe, dry, weather-resistant environment.
- Unique modular knock-down design features rugged durable panels, roof and flooring.
- Patented aluminum interlocking panel system allows for quick, secure attachment.
- Panels available for nighttime light security.
- Robust aluminum extrusions provide vertical support and stability in harsh weather.
- Designed to withstand rough demanding use in unstable environments.
- Efficient high-strength draw latch system firmly secures panels to base.
- Green, low-voltage LED lighting inside roof bows.
- Many accessories available to customize your space.
- Building and roof can be stored and transported within unique collapsible V-Crate™.
- Promote your government agency or department by adding your logo or agency colors.